

Why ERVA QuickCoupler?



Thicker hooks,
hooks do not open



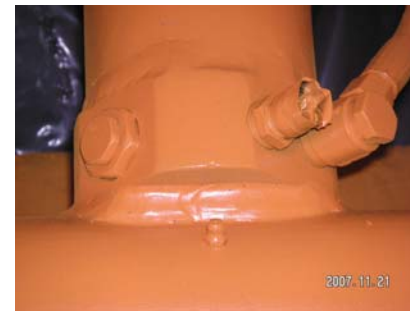
Solid jaw of platina,
jaw does not open



Solid latch
latch does not open



Hydraulic cylinder:
400 bar



Locking with integrated
check valve in cylinder body



Made of steel 4140
All-hardened machine pins

Due to the widespread application in the world, the ERVA Quick Coupler's are designed as 2 pin system. By the 2 pin system the coupler holds firmly the attachment. The hydraulic circuit has definitely to be joined to the low level pressure (pilot pressure of 40 bar) line of the machine. To avoid the self opening of the locking cylinder under load there is an integrated pilot operated check valve in the cylinder. Furthermore as increased safety a safety pin is putted behind the latch.

Material ist St 52-3 machine manufacturing steel or for heavy applications AR400 quality class steels. Machine- attachment pins are made of high performance and quality steels and are hardened completely.

ERVA QuickCouplers are absolutely manufactured according to the attachment tables and projected dimensions from the machine manufacturers. In this way we guarantee the free bounding of all attachments to the machine by means of ERVA QuickCoupler.

